



Staying in London

Our accommodation options

www.speakuplondon.com



Living in the country where you're learning the language is a **vital part of your study experience**. Speak Up London offers you some options so no matter whether you pick a homestay or student residence, **you'll get the most out of your experience in London**.

Here's how to book your accommodation option with Speak Up London:

1

Let us know when you fill out your course application form and what your preferred accommodation options are.

Our Sales and Student Services Teams will record your preferred choice of accommodation.

2

Speak Up London will only be able to secure your accommodation option once your course has been paid in full.




Our team will send you the details of your accommodation and ask you to confirm your choice. Please note that we need you to do this within 24 hours.

3

You'll need to confirm your arrival time and make contact with the host/residence directly, too.

What accommodation option should I choose?

Your accommodation preference depends on your needs and budget. Here are some factors you need to consider when making your choice:

	Homestay	Student Residence	Private Accommodation
 Benefits	<p>Become familiar with the local culture</p> <p>Towels, kitchen utensils and more provided</p> <p>Budget-friendly</p>	<p>Access to great facilities</p> <p>Access to nearby amenities</p> <p>24h assistance</p>	<p>Meet other students from around the world</p> <p>Social environment</p> <p>Budget-friendly</p>
 Drawbacks	<p>Family rules may apply during your stay</p> <p>It can be up to 60 minutes of travel to school</p> <p>Might not be as social</p>	<p>May have higher noise levels</p> <p>Sharing facilities with other students</p> <p>Can be expensive</p>	<p>Shared chores and home responsibilities</p> <p>Can't always choose your housemates</p>
 Zones	2 - 4	1 - 2, occasionally 3 - 4	1 - 6
 Bed linens & towels	Provided	Provided at minimum of 4 weeks booking - otherwise self-catered	Not provided
 Kitchen Items	Use of kitchen restricted depending on package	Extra cost for your own	Depends on home
 Curfew	Discuss with host. Generally, 22:00 curfew for under 18s.	None	None
 Guests	Discuss with host. Generally, not allowed.	Allowed	Allowed
 Smoking /Drinking	Discuss with host. Your homestay profile will show information if the host smokes.	<p>Smoking outside only</p> <p>Drinking with visitors until 23:00 (please ask residence management)</p> <p>Drinking with guests after 23:00 in your room only (noise restrictions may be in place)</p>	Depends on home please check tenancy agreement

Homestay

Half board homestay*	2 meals per day, normally breakfast and dinner.
Bed and breakfast*	Breakfast only
Self catering - Adult homestay only	Student will be able to use kitchen to cook own meals


*Students that have chosen these options might not be allowed to cook in the kitchen. Students will have their lunch outside of the house.


Things students need to bring


- Toiletries
- Personal items to feel like home
- Any medications you are taking, prescription
- Gift for the host family, if you like

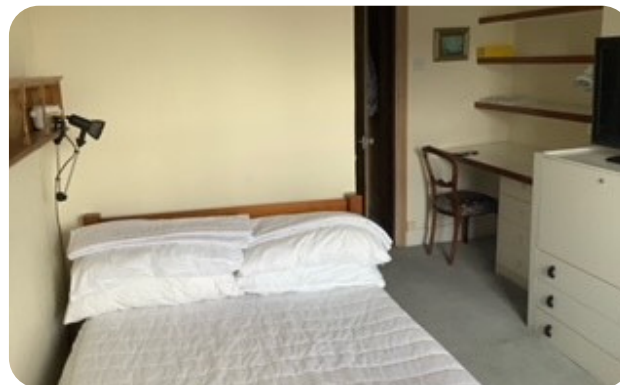
Meals provided

Yes, the amount of meals provided depends on booking type. You'll eat with the family unless you make other arrangements. Special diets (vegetarian, vegan, Halal, allergies) can be catered to for an additional fee. Let your sales advisor know about your special requirements when you ask for accommodation.

 **Breakfast:** Breakfast is usually a light meal of cereal, fruit, toast, juice, or coffee/tea. Hosts may ask you to make your own breakfast.

 **Lunch:** You are responsible for buying your own lunch. There are restaurants and shops nearby the school.

 **Dinner:** Only available if you book half board. You'll eat with the family, or you can make your own meal with the food provided. Please know that your host will set a dinner time and it's your responsibility to let them know if you cannot make it.



Services included

Bed linen, towels and telephone for emergency use. You will be able to do your laundry once a week, however laundry facilities must be discussed with the host.

Extra cost of services

If you want to prepare your own meals, there may be an additional charge for the use of the kitchen.

Airport pick up

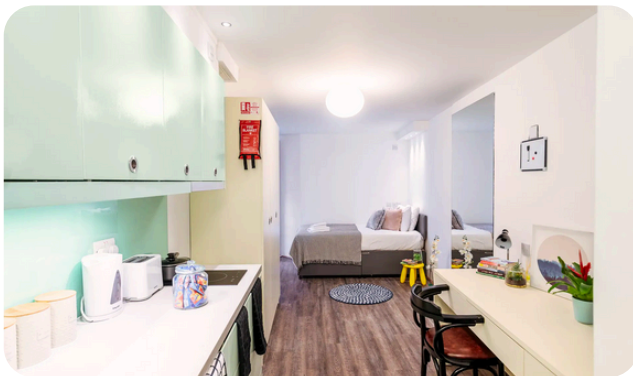
No, please either book your own transportation from the airport to the homestay or ask our sales advisors to book an airport transfer for you.

Transport to school

Your host will help you to find your way to and from school on your first day and will explain to you how to use public transport.

Where are the homestays located?

They are located within Zones 2, 3 and 4 in London. This is all within 30 – 60 mins from the school's location by public transport.



Student Residences

Things students need to bring

- Toiletries
- Towels
- Kitchen pack (pots, pans, plates, cutlery, glasses)
- Personal items to feel like home
- Any medications you are taking, prescription
- Bedding (residences provide bedding if you stay for 4 weeks or more)

Meals provided

No, meals are not provided in student residences. You will need to shop for your ingredients and make your own meals.

Services included

Each residence provides different services, but many student residences can provide cinema, on-site gym, study space, art studio, karaoke room, game area, social spaces, resident events, 24/7 on-site team, on-site laundry, post and parcel services. These are at no extra cost.

Airport pick up

No, please either book your own transportation from the airport to the homestay or ask our sales advisors to book an airport transfer for you.

Transport to school

The closest Tube stations to the school are Oxford Circus and Tottenham Court Road. You can get to Oxford Circus with the Central line, Victoria line or Bakerloo line. Tottenham Court can be reached with the Central line, Elizabeth line and Northern line.

Where are the residences located?

The residences are located between Zones 1, 2 and 3 in London.

Private Accommodation

If you prefer to look for your own accommodation, we can only recommend where to look and what you should be aware of.

Popular property websites/apps include:



Rightmove



Zoopla



OnTheMarket



SpareRoom

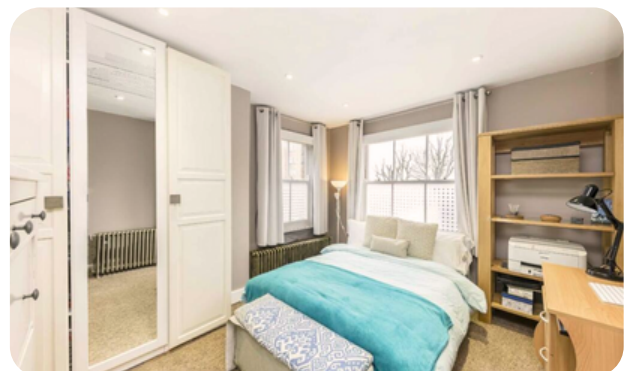
Click me!



Whilst most of the properties listed on these apps are to rent as a whole, you can find some house share options. A commonly used app by our students to find individual rooms in London is [spareroom.co.uk](https://www.spareroom.co.uk), where there are usually quite a few options. The alternative is to get in touch with local estate agents to see what is available in the area.

For rooms or properties that you visit through websites such as Rightmove, SpareRoom or Zoopla, always visit the place with a friend or someone you trust, ask for a written contract and **do not** give anyone money without written confirmation of payment.

Do not hesitate to ask your advisor if you need help.



Frequently Asked Questions

What should I expect when I arrive at my Homestay location?

Your host will give you a warm welcome and an introduction to the local area, such as where the supermarkets are, and transport links, so you'll know how to get to the school. It's normal practice to exchange phone numbers with your host family, for your safety, wellbeing and any other communications.

Your host family will be happy to answer any questions you have about the house, the area, and what to do in London.

What if I am delayed in arriving at my accommodation?

If you're staying with a host family, please let them and the school know of any delays you might have, as it can affect their plans and they'll be able to make other plans for your delayed arrival. For student residences, your delay might affect your check-in.

Do I pay more for checking in/out outside of designated hours?

Each student accommodation will have check-in and check-out times that you will need to follow while you stay there. Typically check-in days are Sundays and check-out days are Saturdays. It's possible that if you want to check-in or check-out outside of those hours – and Sundays – that you'll be charged extra. However, please let your sales advisor know ahead of time so the residence can be notified and we can let you know what charges might apply.

What's the difference between a 'guest' and a 'visitor'?

Guest is a friend or family member who visits you for a few hours and doesn't sleep in your accommodation. Visitors can stay with you overnight in the accommodation. Please check with your accommodation provider on what the policy is for visitors and guests.

What's the difference between: single room, double occupancy, twin room, studio and an en-suite room?

A single room is for 1 person to use only, a double occupancy means that two people share a room which normally includes 1 double bed. Twin rooms can also sleep 2 people, but there will be 2 single beds instead of a double bed.

A studio is a private self-contained room that has its own kitchen and bathroom. An en-suite room is a private room with its own bathroom but you'll be sharing the kitchen space with other people.

How will Speak Up London support me if I'm unhappy with my accommodation?

If, for any reason, you feel unhappy in your accommodation, please talk to our reception team and/or reply to our accommodation feedback email and we will try to help resolve any issues you may have.

Frequently Asked Questions

What are approximate travel times from zones 1, 2, 3 and 4?

The approximate travel times are 15 mins for Zone 1, between 20 mins - 40 mins for Zone 2, between 40 mins - 60 mins for Zone 3. Zone 4 can take 60 mins or more by public transport.

If you need any help navigating through London, we recommend using the CityMapper app:



CityMapper

What's the approximate travel cost from these zones?

In London, you can either use the Oyster Card or your contactless card to pay for travel on the Underground and overground trains.

If you get an Oyster card, you can buy one at most stations for £5, and then you can pay for a weekly or monthly travel pass.

The cost* of the weekly or monthly travel pass is:

Zones	Weekly Travel Card	Monthly Travel Card
1 - 2	£42.70	£164
1 - 3	£50.20	£192.80
1 - 4	£61.40	£235.80

If you prefer to use your contactless debit or credit card, daily travel caps will apply. The daily travel cap means that no matter how much you travel between certain zones in one day, you will not pay more than the cap.

The daily travel caps* are:

Zones	Daily Travel Cap
1 - 2	£8.50
1 - 3	£10
1 - 4	£12.30

We also recommend checking the official [Transport for London website](#) to keep up to date with all changes.

